

TECHNICAL CERTIFICATE

FOR AMATEUR ASTRONOMICAL OPTICS

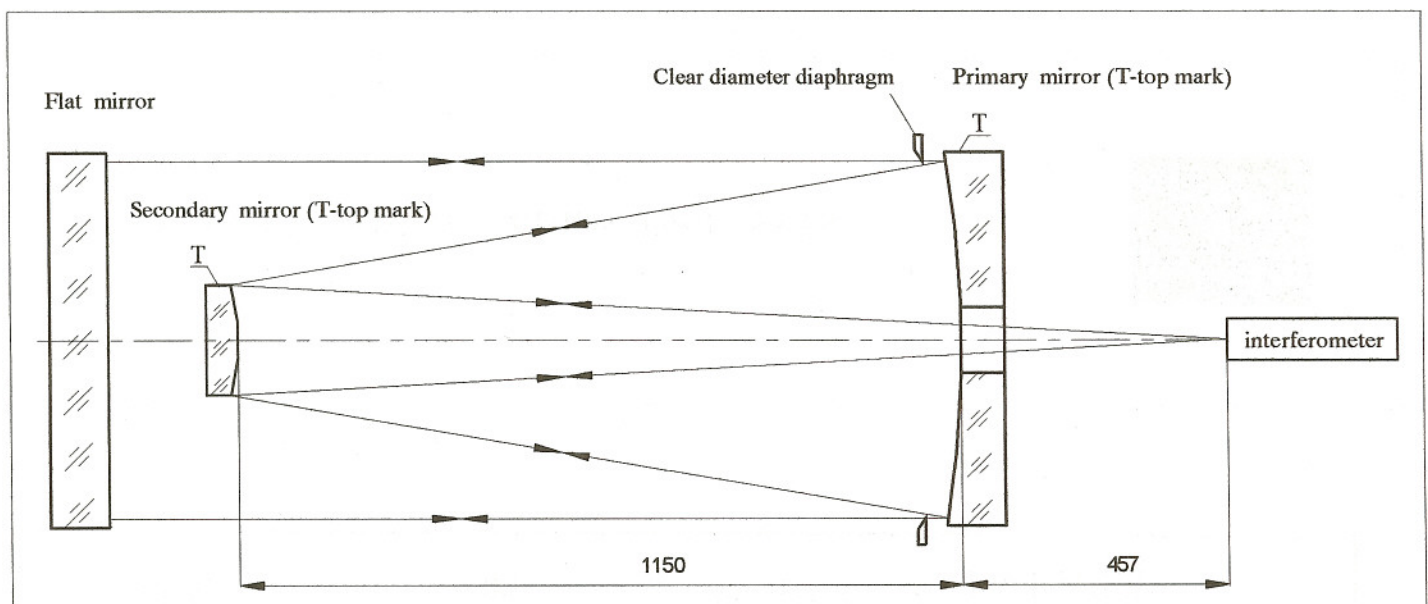
Optical system № 7

RITCHEY-CHRETIEN

Diameter, mm	610
Focal ratio:	f/7,8
Focal extraction, mm:	457
Field, arcmin	60 arcmin

Test type: Interferometric
(in double pass autocollimation scheme with full aperture flat mirror, $\lambda=632,8$ nm)

TEST SCHEME

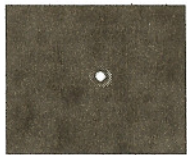
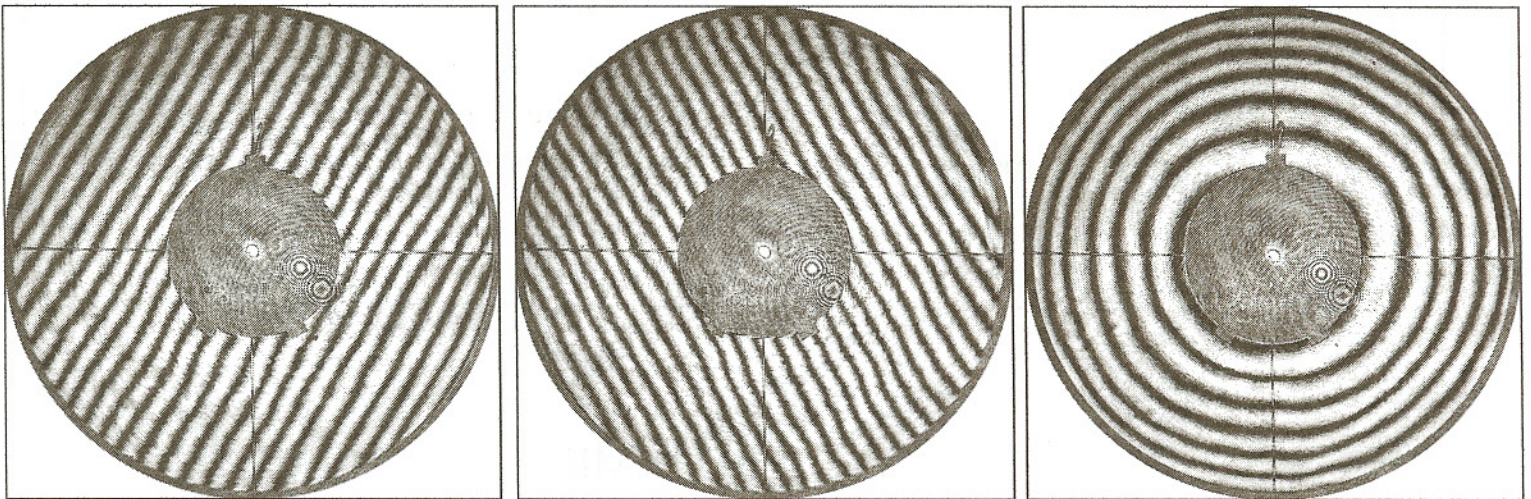


The mirrors set up into the telescope in correspondence with the top mark "T".

OPTICAL COMPONENTS

	Primary mirror	Secondary mirror f/7,8
Diameter, mm	626	222
Clear diameter, mm	610	220
Radius, mm	3480	1864,7
e^2	1,138	6,2771
Thickness, mm	83	28
Central hole diameter,mm	152,4	-
Material	Sytall CO115M	Sytall CO115M
Coating	-	-

THE INTERFEROGRAM OF THE SYSTEM



STAR - LIKE SOURCE IMAGE ($\lambda=632,6$ nm)

SUMMARY ($\lambda=632,8$ nm):

RMS	0,024 λ
Peak to valley	0,1 λ

The RMS and P-V were calculate on the results of total processing several interferograms to exclude an influence of airstreams.